


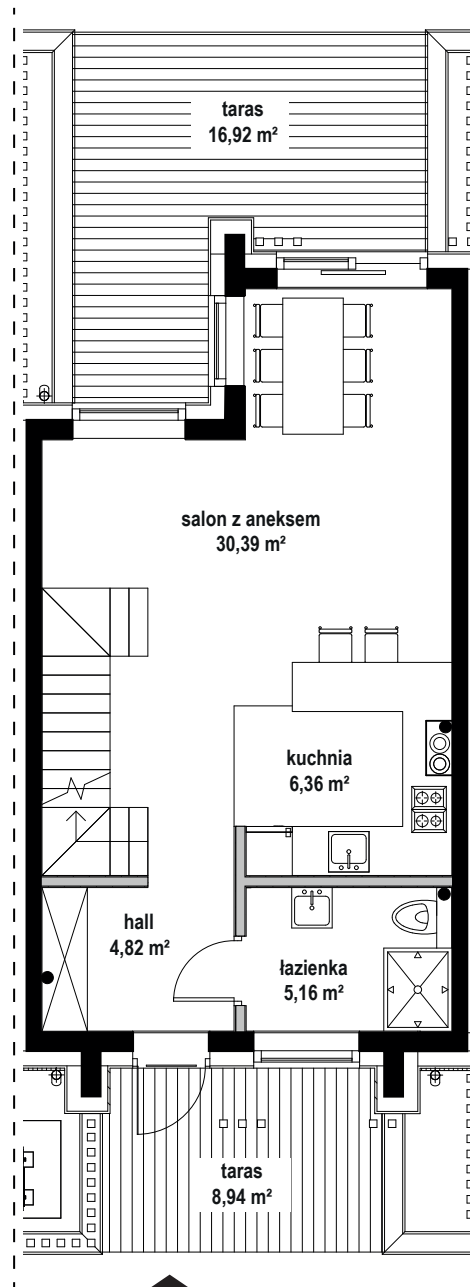
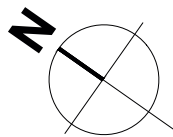


koncepcja zagospodarowania terenu

-  szacht instalacyjny, brak możliwości przebudowy
-  ściana działowa, możliwa przebudowa
-  ściana nośna, brak możliwości przebudowy







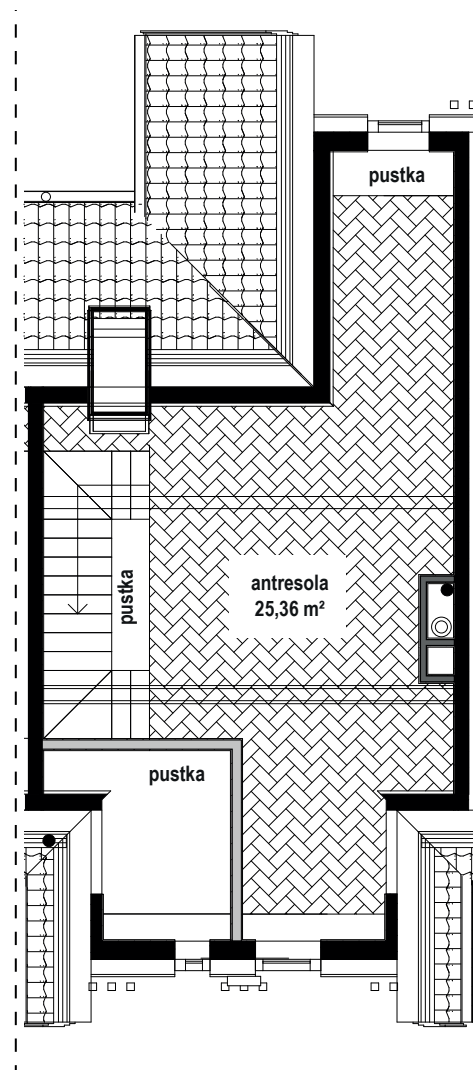
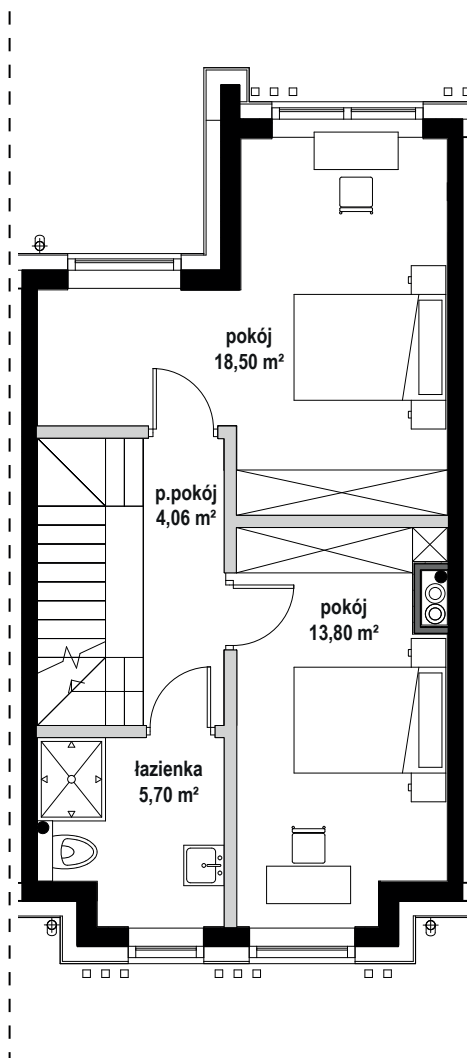
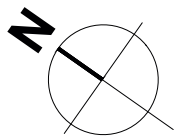
skala 1:100






APARTAMENT	A3
TYP	1P+AK
PIĘTRO	PARTER
POWIERZCHNIA	114,15 m <sup>2</sup>
POW. KONDYGNACJI	46,73 m <sup>2</sup>

## BIURO SPRZEDAŻY

-  886 478 730
-  [www.rydzeworesidence.pl](http://www.rydzeworesidence.pl)
-  [biuro@rydzeworesidence.pl](mailto:biuro@rydzeworesidence.pl)
-  Rydzewo, ul. Mazurska 50







-  szacht instalacyjny, brak możliwości przebudowy
-  ściana działowa, możliwa przebudowa
-  ściana nośna, brak możliwości przebudowy

skala 1:100 

<b>APARTAMENT</b>	<b>A3</b>
<b>TYP</b>	<b>2P/ ANTRESOLA</b>
<b>PIĘTRO</b>	<b>PIĘTRO 1/ ANTRESOLA</b>
<b>POWIERZCHNIA</b>	<b>114,15 m<sup>2</sup></b>
<b>POW. KONDYGNACJI</b>	<b>42,06 m<sup>2</sup> / 25,36 m<sup>2</sup></b>

## BIURO SPRZEDAŻY

-  886 478 730
-  [www.rydzeworesidence.pl](http://www.rydzeworesidence.pl)
-  [biuro@rydzeworesidence.pl](mailto:biuro@rydzeworesidence.pl)
-  Rydzewo, ul. Mazurska 50